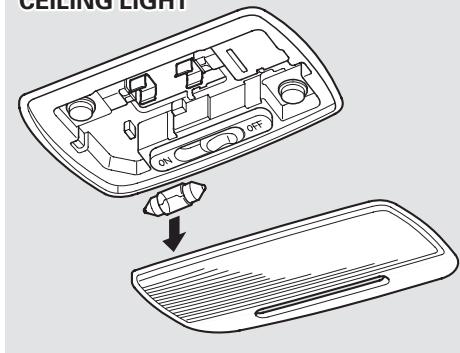


Replacing Interior Light Bulbs

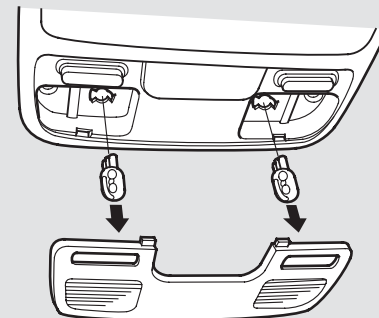
Although the ceiling light, cargo area light and spotlights come apart the same way, they do not use the same type of bulbs.

CEILING LIGHT



1. Remove the lens by carefully prying on the edge of the lens with a fingernail file or a small flat-tip screwdriver. Do not pry on the edge of the housing around the lens.

SPOTLIGHTS



Ceiling light:

Pry on the rear edge of the lens near both sides.

Spotlights:

Pry on the front edge in front of both spotlights.

Cargo area light:

Pry on the front edge to the lens near both sides.

CONTINUED